

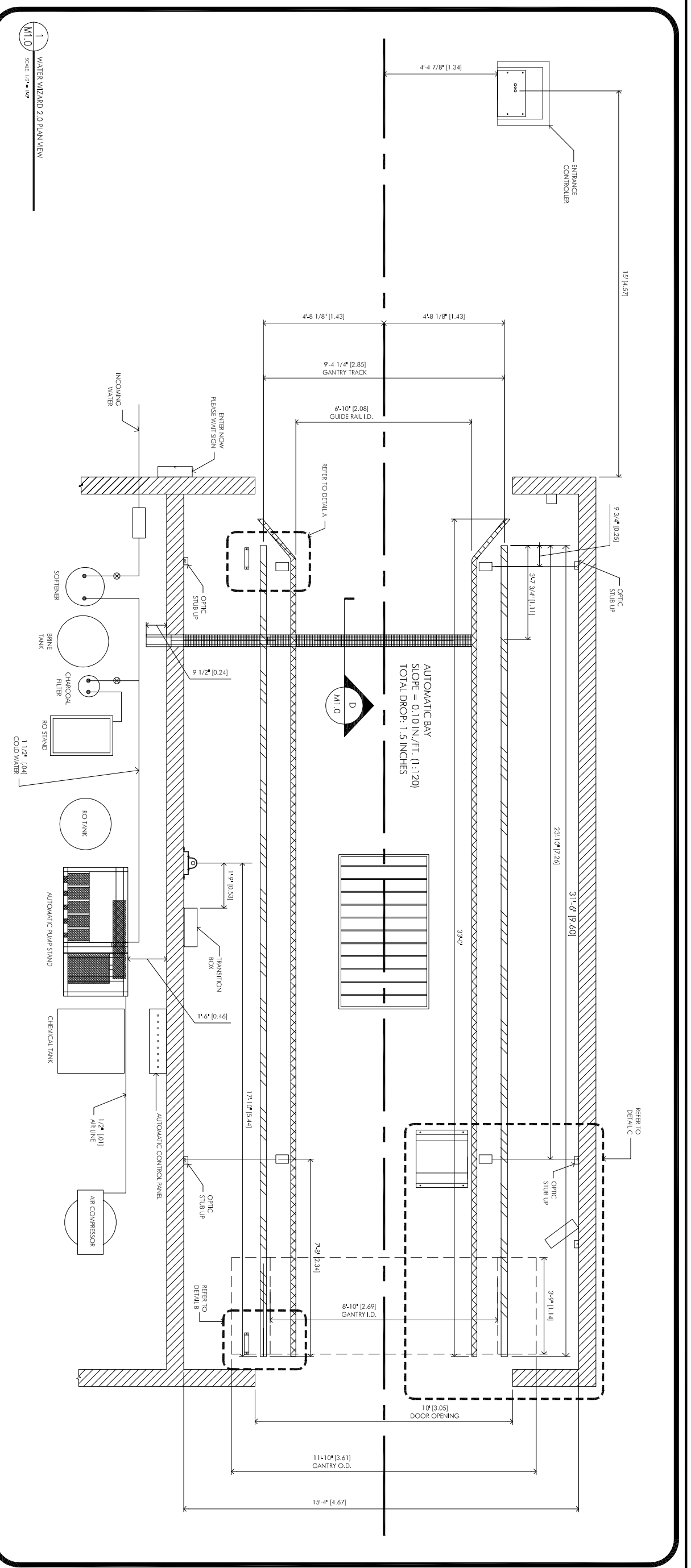


# WATER WIZARD<sup>®</sup>

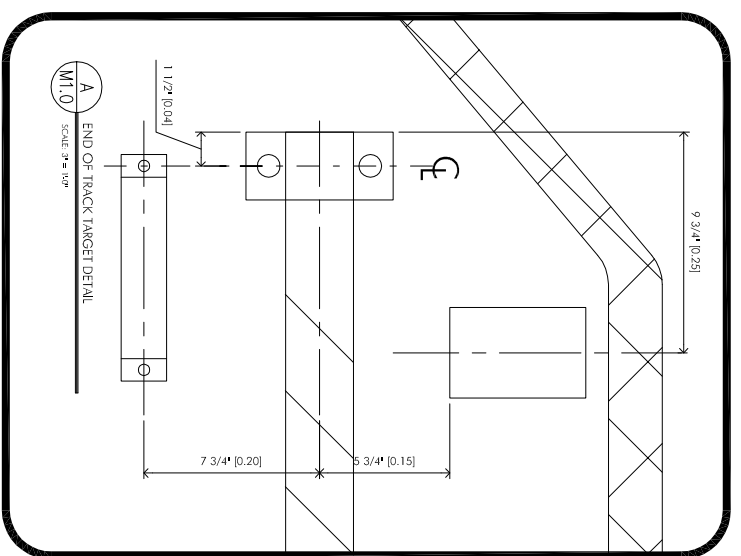
## TECHNICAL DRAWINGS



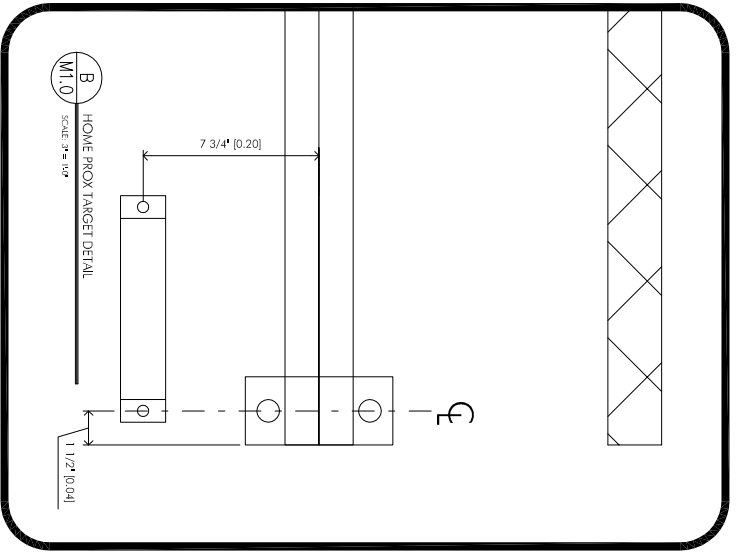
AN O'HANRAHAN COLEMAN COMPANY



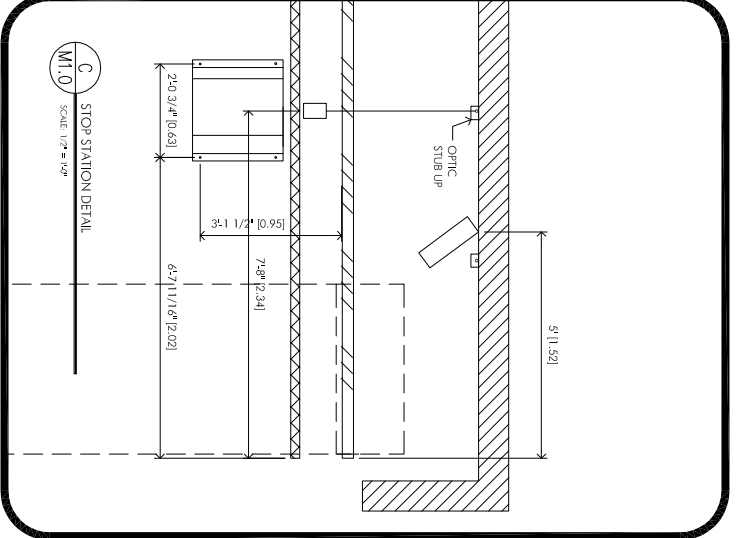
1 WATER WIZARD 2.0 PLAN VIEW  
SCALE: 1/8" = 1'-0"



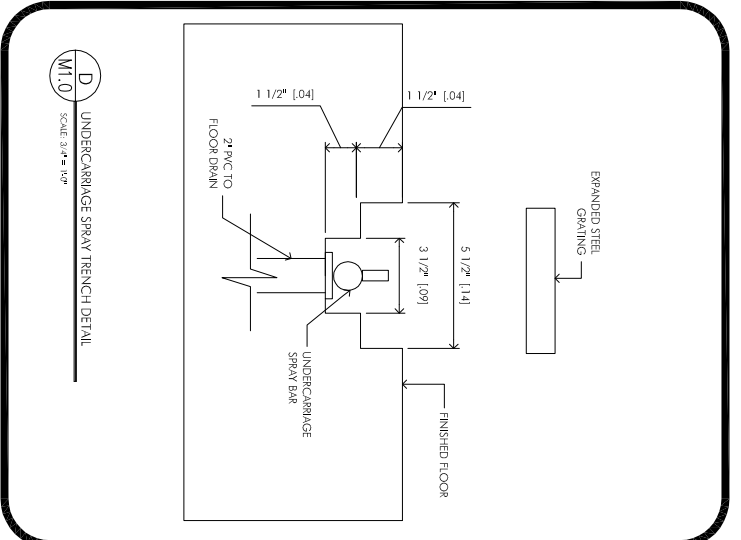
A END OF TRACK TARGET DETAIL  
SCALE: 3/4" = 1'-0"



B HOME ROCK TARGET DETAIL  
SCALE: 3/4" = 1'-0"



C STOP STATION DETAIL  
SCALE: 1/2" = 1'-0"



D UNDERCARRIAGE SPRAY TRENCH DETAIL  
SCALE: 3/4" = 1'-0"

EQUIPMENT INSTALLERS RESPONSIBILITIES FOR THE WATER WIZARD

1. WHEN REQUESTED, J.C.C. WILL PROVIDE THE OPERATOR SITE DRAWINGS FOR THE PROPER PLACEMENT OF EQUIPMENT FOR BOTH THE EQUIPMENT ROOM AND BAY IN A TIMELY MANNER ONCE SITE QUESTIONNAIRE HAS BEEN RECEIVED.
2. IF SITE INCLUDES A FLOOR HEAT SYSTEM, OPERATOR IS RESPONSIBLE TO INSTALL IN-FLOOR TUBING SO AS TO AVOID THE AREA OF BAY FLOOR DIRECTLY BENEATH THE DRIVE RAIL AND GANTRY RAIL MOUNTING LOCATION AS SPECIFIED ON THE ABOVE MENTIONED DRAWINGS. JIM COLEMAN CO.'S EQUIPMENT INSTALLATION DOES NOT INCLUDE FLOOR HEAT INSTALLATION UNLESS OTHERWISE SPECIFIED AND QUOTED SEPARATELY.
3. OPERATOR IS RESPONSIBLE FOR THE MAINTENANCE AND INSTALLATION OF THE AUTO-CASHER. IF OPERATOR CHOOSES TO CONSTRUCT AUTO-CASHER BASE OF MASONRY, JIM COLEMAN CO. WILL PROVIDE A TYPICAL BRICKWORK INSTALLATION DRAWING THAT WILL INCLUDE PROPER HEIGHT AND LOCATION OF CASHER. THIS IS TO BE COMPLETED PRIOR TO INSTALLATION OF THE AUTO-CASHER.
4. J.C.C. INSTALLERS WILL MAKE FINAL TERMINATION OF LOW VOLTAGE CONTROL CIRCUITS.
5. J.C.C. INSTALLERS WILL MAKE NECESSARY WIRING AND PLUMBING CONNECTIONS FROM THE SHOT FREE RINSE (SFR) SYSTEM TO THE AUTOMATIC PLUMBING UNIT.

PLUMBERS RESPONSIBILITIES FOR THE WATER WIZARD

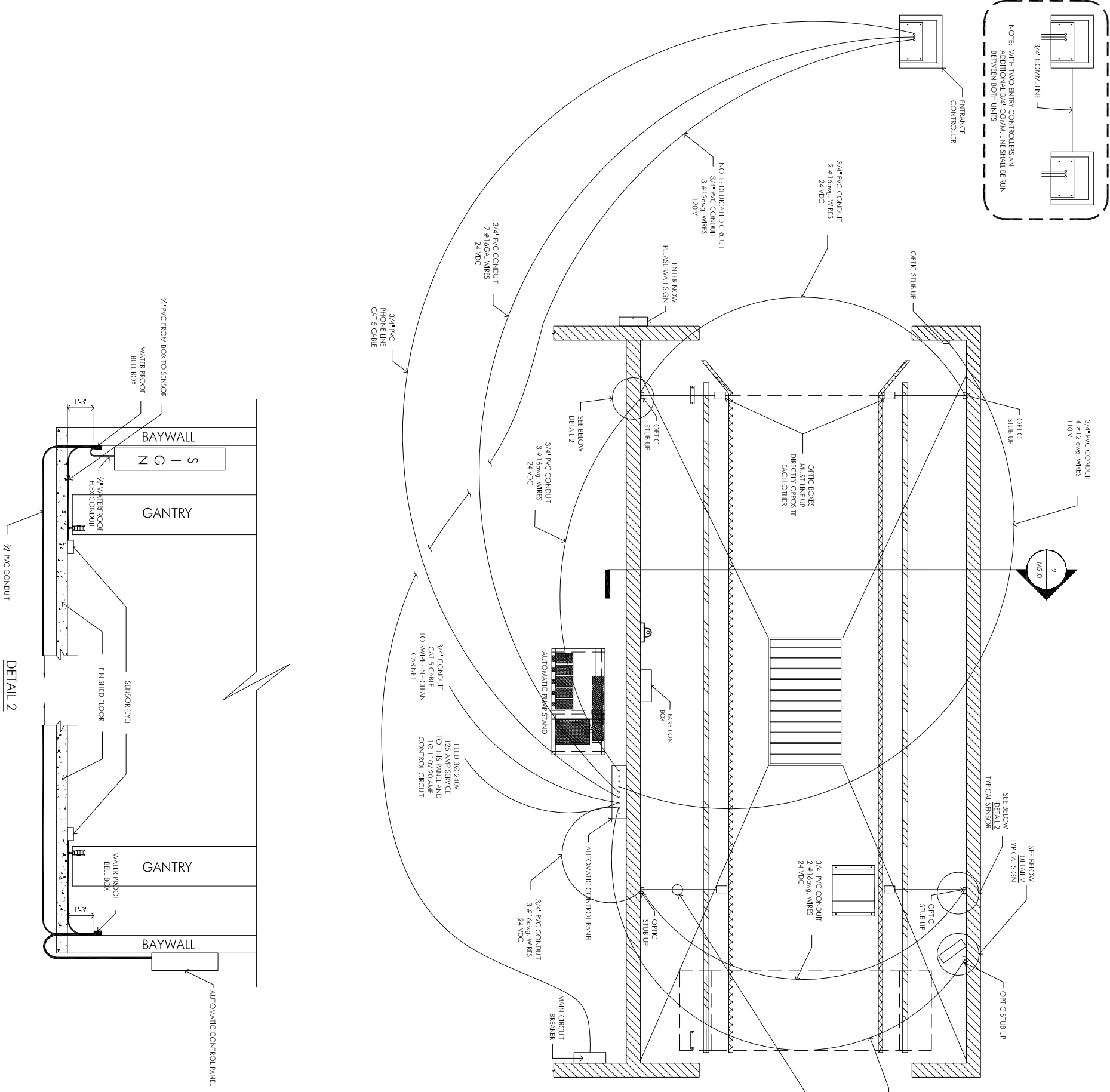
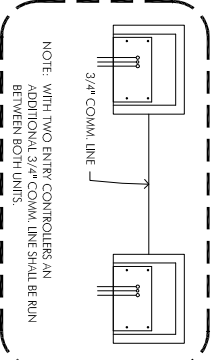
1. BRING WATER LINE AS SPECIFIED TO ALL AUTOMATIC EQUIPMENT
2. INSTALL THE HOT, COLD, AND SPOT FREE RINSE PRING AS SPECIFIED
3. INSTALL WATER SOFTENER, BOILERS, WATER HEATERS, AND ANY OR ALL PLUMBING UP STREAM OF THE AUTOMATIC PLUMBING UNIT
4. RUN ALL AIR LINES AS SPECIFIED IN THE DRAWINGS TO ALL EQUIPMENT UTILIZING COMPRESSED AIR
5. RUN ALL DRAINS AS SPECIFIED IN THE PLUMBING SITE PLAN

NOTE: PLEASE DO NOT SCALE DRAWING  
CONTACT JCC FOR ANY DISCREPANCIES  
1-800-999-9878.

OWNER: <b>JIM COLEMAN COMPANY</b> 5842 WEST 34TH STREET HOUSTON, TX 77092		SHEET NAME: <b>WATER WIZARD</b>	
SCALE: AS SHOWN	DATE: 05/27/2004	DRAWN BY: JTRVINO	APPROVED BY: JTRUELOVE
DRAWING A.K.O.:	EQUIPMENT A.K.O.:	FILE NAME: T:\WATER WIZARD\M1.0-52004	
REVISIONS:	OWNER SEAL OR APPROVAL:	SHEET: <b>M1.0</b>	

**World Class Manufacturing In Car Wash Equipment**

HOME OFFICE: 5842 WEST 34th STREET  
HOUSTON, TEXAS 77092  
PH: 1-800-999-9878 FAX: 713-683-8624  
www.jccolmanco.com



- EQUIPMENT INSTALLERS RESPONSIBILITIES FOR THE WATER WIZARD**
1. WHEN REQUESTED, JCC WILL PROVIDE THE OPERATOR SITE DRAWINGS FOR THE PROPER PLACEMENT OF EQUIPMENT FOR BOTH THE ELECTRICAL AND ELEVATION PORTION. OPERATOR ONCE SITE QUESTIONNAIRE HAS BEEN RECEIVED.
  2. IF SITE INCLUDES A FLOOR HEAT SYSTEM, OPERATOR IS RESPONSIBLE TO INSTALL IN-FLOOR TUBING SO AS TO AVOID THE AREA OF BAY FLOOR BAY WALL JOINTS AND BAY WALL JOINTS. SEE ABOVE MENTIONED DRAWINGS. JIM COLEMAN CO.'S EQUIPMENT INSTALLATION DOES NOT INCLUDE FLOOR HEAT INSTALLATION UNLESS OTHERWISE SPECIFIED AND QUOTED SEPARATELY.
  3. OPERATOR IS RESPONSIBLE FOR THE ACQUIRING AND INSTALLATION OF THE AUTO-CASHER. IF OPERATOR CHOOSES TO CONSTRUCT AUTO-CASHER BASE OF MASONRY, JIM COLEMAN CO. WILL PROVIDE A TYPICAL BRICKWORK INSTALLATION DRAWING THAT WILL INCLUDE THE TYPICAL BRICKWORK AND THE SPACING IS TO BE COMPLETED PRIOR TO INSTALLATION OF THE AUTOMATIC EQUIPMENT.
  4. JCC INSTALLERS WILL MAKE FINAL TERMINATION OF LOW VOLTAGE CONTROL CIRCUITS
  5. JCC INSTALLERS WILL MAKE NECESSARY WIRING AND PUMPING CONNECTIONS FROM THE SPOT FREE RINSE BRUSH SYSTEM TO THE AUTOMATIC PUMPING UNIT.
- PUMPERS RESPONSIBILITIES FOR THE WATER WIZARD**
1. BRING WATER LINE AS SPECIFIED TO ALL AUTOMATIC EQUIPMENT
  2. INSTALL THE HOT, COLD, AND SPOT FREE RINSE PIPING AS SPECIFIED
  3. INSTALL WATER SOFTENER, BOILERS, WATER HEATERS, AND ANY/OR ALL PUMPING UP STREAM OF THE AUTOMATIC PUMPING UNIT
  4. RUN ALL AIR LINES AS SPECIFIED IN THE DRAWINGS TO ALL EQUIPMENT UTILIZING COMPRESSED AIR
  5. RUN ALL DRAINS AS SPECIFIED IN THE PUMPING SITE PLAN FOR
- ELECTRICIANS RESPONSIBILITIES FOR THE WATER WIZARD**
1. RUN CONDUIT TO LOCATIONS INDICATED IN THE WATER WIZARD DRAWINGS SET.
  2. RUN PROPER SIZE ELECTRIC SERVICE TO EACH INDIVIDUAL PIECE OF EQUIPMENT.
  3. RUN BOTH HIGH AND LOW VOLTAGE SERVICE TO ALL DEVICES.
  4. RUN ALL CONDUIT AND WIRE TO THE AUTO-CASHER
  5. RUN ALL CONDUIT AND WIRE TO SENSOR BOXES (ELEC. EYES)
  6. RUN ALL CONDUIT AND WIRE TO ALL SENS.
  7. RUN 1 - 125 AMP 3 PHASE 208/230/460 VOLT TO THE PUMPING UNITS PANEL DISCONNECT.
  8. RUN 1 - 20 AMP 1 PHASE 120 VOLT GROUNDED CIRCUIT TO THE PUMPING UNITS CONTROL PANEL.
  9. RUN ALL WIRE AS PER EQUIPMENT REQUIREMENTS TO ALL EQUIPMENT UP-STREAM OF PUMPING STAND.

NOTE: PLEASE DO NOT SCALE DRAWING CONTACT JCC FOR ANY DISCREPANCIES 1-800-999-9878.

**World Class Manufacturing In Car Wash Equipment**

HOME OFFICE: 5842 WEST 34th STREET  
HOUSTON, TEXAS 77092  
PH: 1-800-999-9878 FAX: 713-683-9824  
www.jimcolemanco.com

OWNER: <b>JIM COLEMAN COMPANY</b> 5842 WEST 34TH STREET HOUSTON, TX 77092			
SHEET NAME: <b>WATER WIZARD ELECTRICAL AND ELEVATION</b>			
SCALE: AS SHOWN	DATE: 05/27/2004	DRAWN BY: JTRVINO	APPROVED BY: JTRUELOVE
DRAWING AKO:	EQUIPMENT AKO:	FILE NAME: T:\WATER WIZARD\W1.0-52004	

REVISIONS:			
ENGINEER SEAL OR APPROVAL:			
SHEET:	<b>M2.0</b>		

